

## Carestream Pro DR

Cat # ASV-CS-GDX-14x17-T

**CARESTREAM Pro DR digital radiography system utilizes a Tethered 14"x17" flat panel to provide portability and flexibility for general radiographic applications using its unique image processing system and a proprietary flat panel detector.**

Imaging for the FUTURE

Innovative Imaging  
SOLUTIONS

# Carestream

## Digital Radiography System



# ASSURANCE

## KEY FEATURES

- Full compatibility with DICOM 3.0 standard and Windows™ based platform
- Side by side dual study comparison capabilities
- Automatic Exposure Detection (AED) Trigger mode as well as the line trigger modes
- Various preset image processing modes for different studies
- Communication interface through Gigabit Ethernet (1000 BASE-T)
- Simple & easy integration with all kinds of digital radiography systems



### Superior Image Quality

- Brilliant Modulation Transfer Function (MTF)
- Superior diagnostic image quality through flat panel detector with the proven technology of VXvue image processing software
- Dramatically reduced X-ray dose for patient and user safety during an examination

### Versatile Diagnostic Capabilities

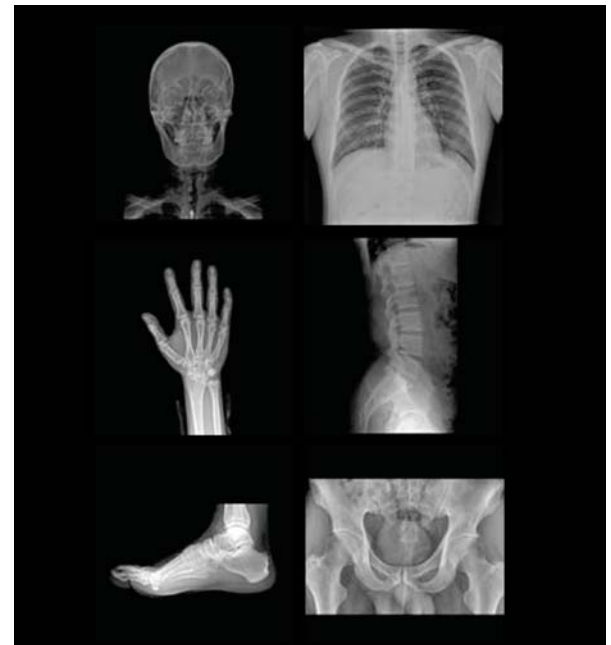
- 9.4 Mega-pixel flat panel detector with radiographic imaging capability 14-bit signal digitization providing an extremely wide dynamic range for a greater grayscale
- Optimized algorithms for each different body part selection
- Fast readout time enables an image to be captured and transmitted within 4 seconds

### DICOM Viewers

- 4 Browser Based LAN/WAN Image Suite Concurrent Viewer Licenses

## PANEL SPECS

Application	General radiography
Technology	Flat panel detector: a-Si TFT with PIN diode
Scintillator	GOS/Gadolinium Oxysulfide (Gadox)
Pixel pitch	140um x 140um
Pixels	2560 x 3072 pixels
Image size	14 x 17 inches (35 x 43cm)
A/D conversion	14-bit
Grayscale	16,384 Grayscales
X-ray voltage range	40 ~ 150kVp
X-ray generator Interface	Line trigger: DR trigger Mode, Passive trigger mode Auto trigger: AED Mode
Interface	Gigabit Ethernet (1000BASE-T)
Dimensions	18.1 (W) x 15.1 (L) x 0.59 (H) inches (460 x 384 x 15 mm)
Weight	Approx. 2.9kg (6.4 Lbs)
Operating Environment	15 - 35 °C, 30 - 80% RH (non-condensing)
Power	DC24V, 0.5A
Usage	Standard cassette size



## COMPUTER SPECS

- 4th Gen Core i7 (4/8 Cores) 16GB DDR3 Memory
- Intel 4600 Hard Drive - DVD +/- RW Burner - 1X Gigabit Ethernet - USB 3.0 - 2x1 TB RAID 1
- Windows 8.1 Pro 64 Bit - Includes 23" 2.1MP Monitor - 3 Year Parts Warranty
- Includes VXvue Acquisition and Image Suite PACS