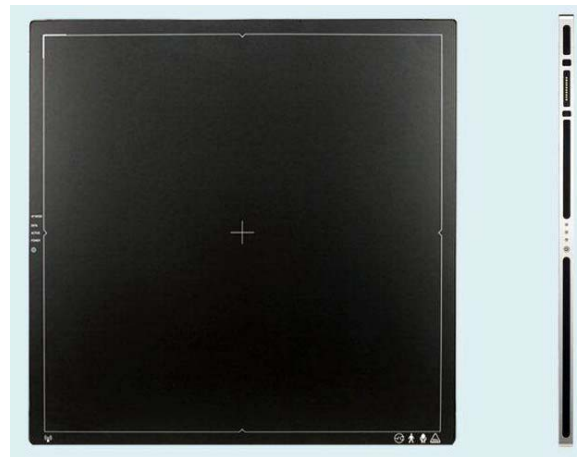


CARESTREAM Pro DR flat panel digital radiography system with a large field coverage area of 17"x17" designed for general radiographic application using its unique image processing system and proprietary flat panel detector.

The active 9.4 Mega-pixels of the Carestream Pro DR system ensure superior image quality for today's high standards for precise diagnosis performance utilizing the Carestream digital radiographic flat panel detector technology.

Imaging for the FUTURE

Innovative Imaging
SOLUTIONS



Carestream

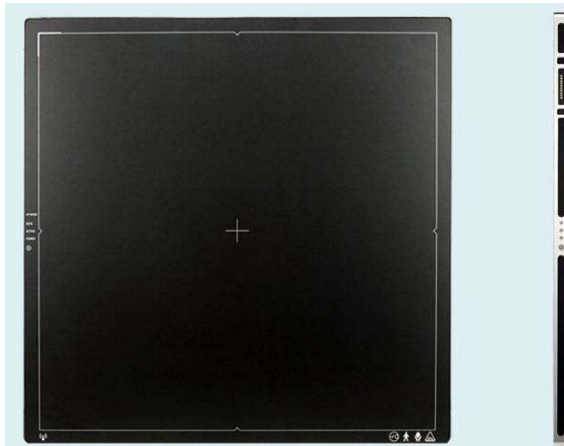
Digital Radiography System



ASSURANCE

KEY FEATURES

- Full compatibility with DICOM 3.0 standard and Windows™ based platform
- Side by side dual study comparison capabilities
- Automatic Exposure Detection (AED) Trigger mode as well as the line trigger modes
- Various preset image processing modes for different studies
- Communication interface through Gigabit Ethernet (1000 BASE-T)
- Simple & easy integration with all kinds of digital radiography systems



Superior Image Quality

- Brilliant Modulation Transfer Function (MTF)
- Superior diagnostic image quality through flat panel detector with the proven technology of VXvue image processing software
- Dramatically reduced X-ray dose for patient and user safety during an examination

Versatile Diagnostic Capabilities

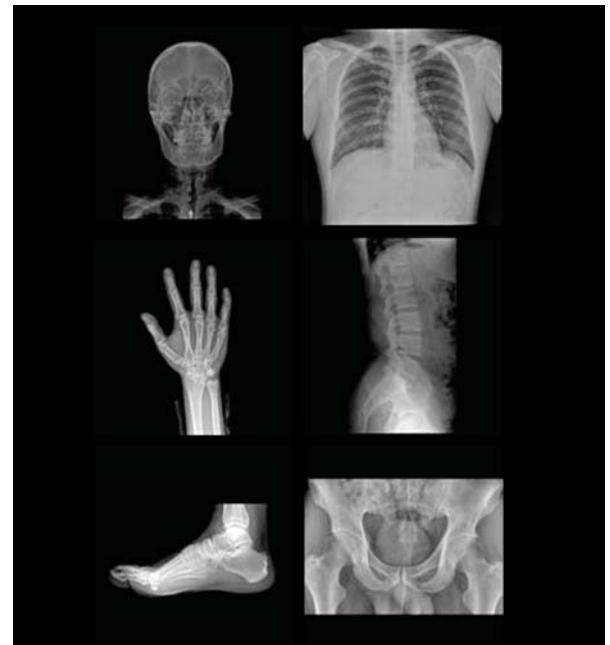
- 9.4 Mega-pixel flat panel detector with radiographic imaging capability 16-bit signal digitization providing an extremely wide dynamic range for a greater grayscale
- Optimized algorithms for each different body part selection
- Fast readout time enables an image to be captured and transmitted within 4 seconds

DICOM Viewers

- 4 Browser Based LAN/WAN Image Suite Concurrent Viewer Licenses

PANEL SPECS

| | |
|---------------------------|---|
| Application | General radiography |
| Technology | Flat panel detector: a-Si TFT with PIN diode |
| Scintillator | Gadolinium Oxysulfide (Gadox) Cesium Iodide (Csi) |
| Pixel pitch | 140um x 140um |
| Pixels | 3072 x 3072 pixels |
| Image size | 17 x 17 inches (43 x 43cm) |
| A/D conversion | 16-bit |
| Grayscale | 16384 grayscales |
| X-ray voltage range | 40 ~ 150kVp |
| X-ray generator Interface | Line trigger: DR trigger Mode, Passive trigger mode Auto trigger: AED Mode |
| Interface | Gigabit Ethernet (1000BASE-T) |
| Dimensions | 18.11 (W) x 18.11 (L) x 0.61 (T) inches |
| Weight | Approx. 9.2 Lbs |
| Operating Environment | 15 - 35 °C, 30 - 80% RH (non-condensing) |
| Power | DC24V, 1.0A |
| Image Acquisition | 1.5 Seconds |



COMPUTER SPECS

- 4th Gen Core i7 (4/8 Cores) 16GB DDR3 Memory
- Intel 4600 Hard Drive - DVD +/- RW Burner - 1X Gigabit Ethernet - USB 3.0 - 2x1 TB RAID 1
- Windows 8.1 Pro 64 Bit - Includes 23" 2.1MP Monitor - 3 Year Parts & Labor Warranty
- Includes VXvue Acquisition and Image Processing Software